

INLINE DUCT FAN DF04

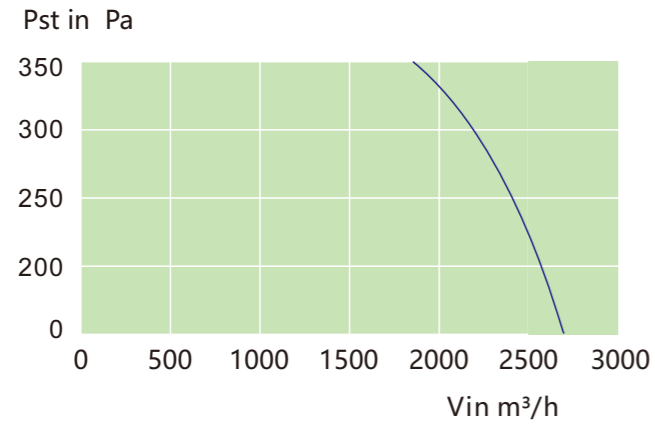
Improving air quality for growth



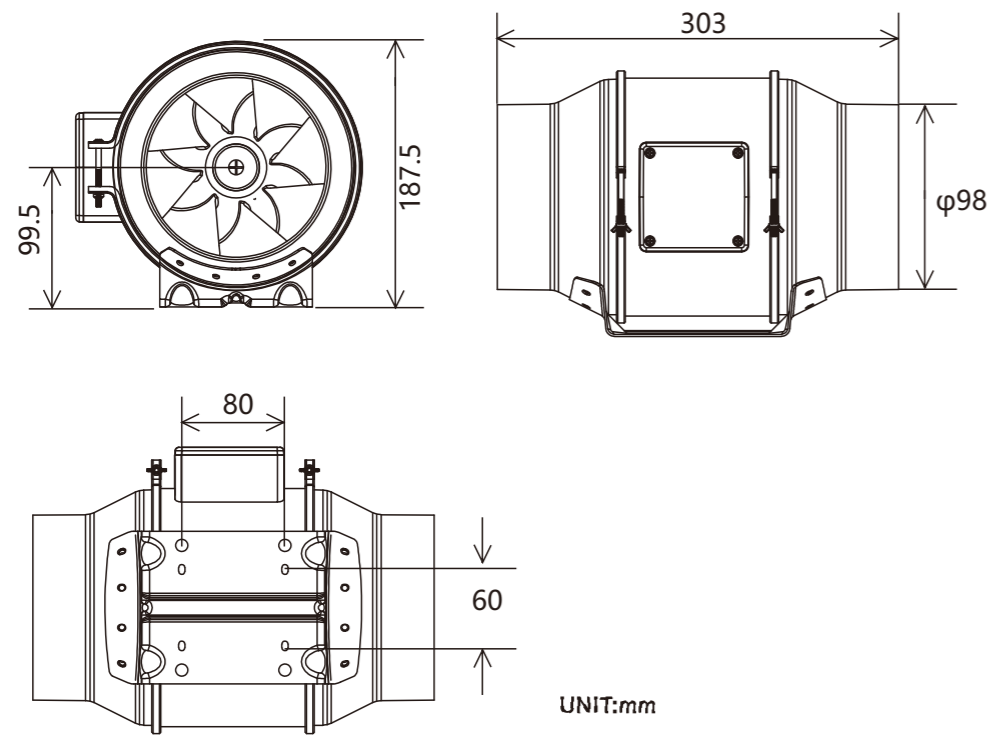
VENTILATION Series

VENTILATION Series

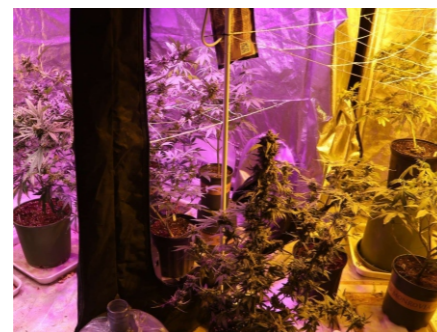
Performance Curve



DF04 Outside dimension drawing



Onsite application



Features

- An air filtration kit with everything you need to cool, ventilate, and control odors in your grow space.
- Features the CLOUDLINE LITE inline fan with speed controller, delivering silent and efficient performance.
- Carbon filter with prefilter cloth uses 1200+ IAV activated charcoal for high efficacy odor blocking.
- Four-layer flexible ducting connects the inline fan and filter to your grow tent to direct airflow.
- Kit Duct Size: 6" | Fan Airflow: 352 CFM | Noise 34 dBA | Carbon Thickness: 38 mm | Ducting Length: 25 ft.

Model No.	DF04
Factory ID No.	32100090
Product Name	Air Filtration Kit 4"

Fan Unit	DF04
Total Dimensions	7.48 x 11.89 x 7.87 in.
Screw Hole Size	Ø 0.197 in.
Cord Length to Controller	72 in.
Controller Total Dimensions	3.3 x 3.3 x 0.98 in.
Total Airflow (Fan Only)	205 CFM
Total Noise	32 dBA
Max Speed	2700 RPM
Static Pressure	324 Pa
Voltage	100-240V AC
Frequency	50/60Hz
Max Power Draw	28 W
Average Power Usage	24 W
Current	0.23 A
Power Connector Type	US Plug (NEMA 1-15 Type-A)
Operating Humidity	35 to 85% RH
Operating Temperature	0 to 140°F
Ingress Protection	IP 44
Mounting Positions	Horizontal or Vertical
L10 Life Expectancy	67,000 Hours

Carbon Filter	DF04
Total Dimensions	13.35 x 6.97 in.
Flange Material	Aluminum
Flange Design	Reversible
Mesh Material	Stainless Steel
Carbon Grade	1200+
Carbon Type	Australian Charcoal
Maximum Airflow	210 CFM

Ducting	DF04
Length	78.74 in. (2 m)
Outer Layer	PVC Thermoplastic
Inner Material	Aluminum Foil